

# Mountney Bridge

Westham Pevensey BN24 5NJ

Warehouse | 1,001 - 2,323 ft<sup>2</sup>



Newly refurbished



Close to Eastbourne town centre



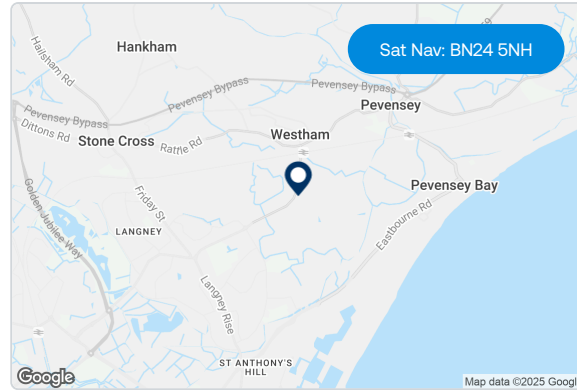
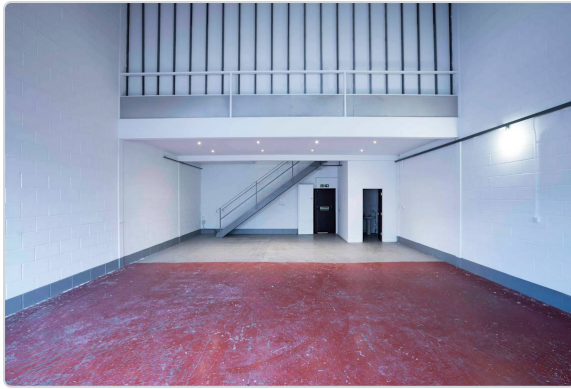
Roller shutter door



On-site parking

Available to Let





## Description

Mountney Bridge is a multi-let industrial estate to the north east of Eastbourne. The available units are part of the most modern area of the estate and are adjacent to one another, so they can be taken either individually or as a whole. The units will shortly undergo refurbishment with new LED lighting and decoration, new loading and personnel doors, and external respraying.

## Further information

### EPC

Unit 3: D, Unit 37: D, Unit 43: D, Units 47 & 48: E, Unit 53: E

### Rent

Monthly rent is an estimate based on a three-year term, excluding VAT, insurance, service charge. Payment terms vary.

### Terms

Available on new full repairing and insuring leases.

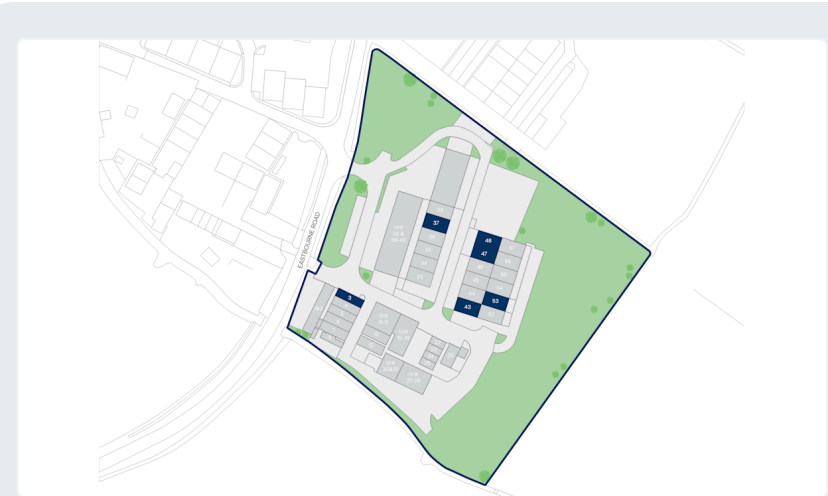
### Legal costs

All parties will be responsible for their own legal costs incurred in the transaction.

## Location

The estate is located approximately 12 minutes drive to the north east of Eastbourne town centre along the B2191. In the wider South East the property is 45 minutes from Brighton and approximately 60 minutes from Crawley.

The A22 provides the most arterial route north towards London and the M25 and is approximately 40 miles to the north of Mountney Bridge Industrial Estate.



## Accommodation:

| Unit          | Property Type | Size (sq ft) | Availability | PCM Rent (£) |
|---------------|---------------|--------------|--------------|--------------|
| Unit 3        | Warehouse     | 1,001        | Immediately  | 773          |
| Unit 37       | Warehouse     | 1,245        | Immediately  | 1,025        |
| Unit 43       | Warehouse     | 1,194        | Immediately  | 1,455        |
| Units 47 & 48 | Warehouse     | 2,323        | Immediately  | 2,889        |
| Unit 53       | Warehouse     | 1,261        | Immediately  | 1,545        |
| <b>Total</b>  |               | <b>7,024</b> |              |              |

Rent is quoted on a per calendar month basis and is provided as a market estimate, subject to change on an assumed three year term. Rent is quoted exclusive of rates, VAT, insurance, and service charge. Please note that rent payment may not be due monthly

[Book a viewing](#)

**Mileway**

Ezekiel Eboda  
southeast@mileway.com  
0203 991 3516

**Oldfield Smith & Co.**  
Chartered Surveyors

Richard Oldfield  
richard@oldfield-smith.co.uk  
01825 762222

This document (together with any attachments, appendices, and related materials, the "Materials") is provided on a confidential basis for informational due diligence purposes only and is not, and may not be relied on in any manner as legal, tax, investment, accounting or other advice or as an offer or invitation to lease the property referred to herein or otherwise enter into any other transaction, agreement or arrangement, nor shall it or the fact of its distribution form the basis of, or be relied on in connection with, any lease or other contract or any commercial or investment decision. If such offer is made, it will only be made by means of heads of terms (collectively with any additional documents, the "Heads of Terms"), which would contain material information not contained in the Materials and which would supersede and qualify in its entirety the information set forth in the Materials. In the event that the descriptions or terms described herein are inconsistent with or contrary to the descriptions in or terms of the Heads of Terms, the Heads of Terms shall control. None of Mileway nor any of its respective affiliates makes any representation or warranty, express or implied, as to the accuracy or completeness of the information contained herein and nothing contained herein should be relied upon as a promise or representation of any kind.

**Mileway**