

Towers Business Park

Wheelhouse Rd Rugeley WS15 1UZ

Office and Warehouse | 1,426 - 1,492 ft²



6 miles north east of Cannock



Allocated car parking



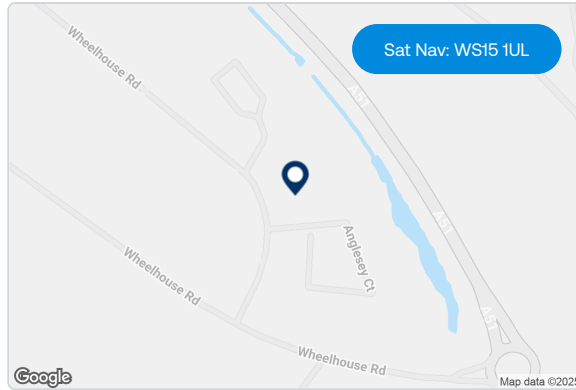
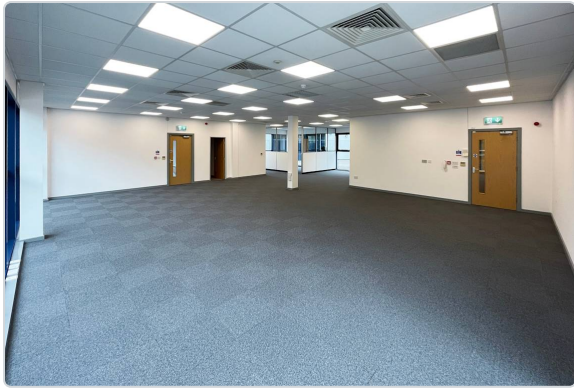
Gated access



WC's and kitchen

Available to Let

ANGLESEY HOUSE



Description

Towers Business Park provides a modern purpose built estate. Towers Point is a 5 storey prestigious office tower which forms a focal point for Towers Business Park. The building provides individual self-contained office suites by floor. The glass clad building also provides a passenger lift with conventional stair access to the floors.

Further information

EPC Offices: C,
Rent: Monthly rent is an estimate based on a three-year term, excluding VAT, insurance, service charge. Payment terms vary.

Location

Towers Business Park occupies a prominent position fronting the Rugeley Bypass (A51) being approximately 6 miles north east of Cannock and 8 miles south east of Stafford.

Terms: Available on new full repairing and insuring leases.
Legal costs: All parties will be responsible for their own legal costs incurred in the transaction.

[Book a viewing](#)

Mileway

Richard Sidaway
 midlands@mileway.com
 0121 368 1760

**ANDREW DIXON
& COMPANY**

Andrew Hartley
 enquiries@adixon.co.uk
 01543 506 640



Accommodation:

Unit	Property Type	Size (sq ft)	Availability	PCM Rent (£)
Towers Pt Gnd Flr Office	Office	1,426	Immediately	950
Wolseley Ct 217	Warehouse	1,492	Immediately	1,245
Total		2,918		

Rent is quoted on a per calendar month basis and is provided as a market estimate, subject to change on an assumed three year term. Rent is exclusive of rates, VAT, insurance, and service charge. Please note that rent payment may not be due monthly.

This document (together with any attachments, appendices, and related materials, the "Materials") is provided on a confidential basis for informational due diligence purposes only and is not, and may not be relied on in any manner as legal, tax, investment, accounting or other advice or as an offer or invitation to lease the property referred to herein or otherwise enter into any other transaction, agreement or arrangement, nor shall it or the fact of its distribution form the basis of, or be relied on in connection with, any lease or other contract or any commercial or investment decision. If such offer is made, it will only be made by means of heads of terms (collectively with any additional documents, the "Heads of Terms"), which would contain material information not contained in the Materials and which would supersede and qualify in its entirety the information set forth in the Materials. In the event that the descriptions or terms described herein are inconsistent with or contrary to the descriptions in or terms of the Heads of Terms, the Heads of Terms shall control. None of Mileway nor any of its respective affiliates makes any representation or warranty, express or implied, as to the accuracy or completeness of the information contained herein and nothing contained herein should be relied upon as a promise or representation of any kind.

Mileway