

# Treforest Industrial Estate - Unit F6

Pontypridd, CF37 5YR  
Warehouse | 22,035 ft<sup>2</sup>



Excellent road links via A470



Ample car parking



Office accommodation



LED lighting



EV charging points

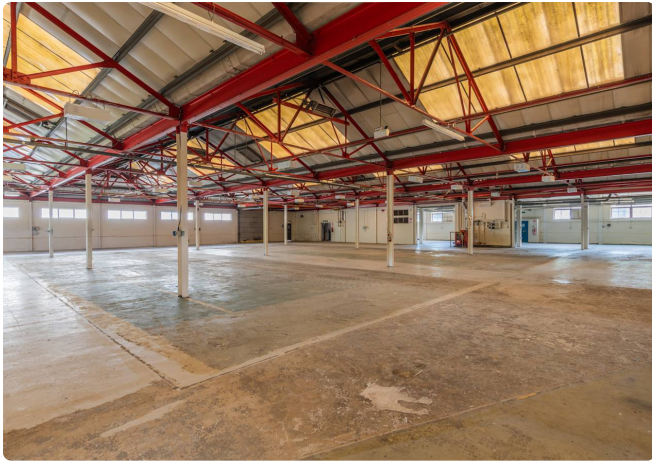
Available to Let



## Location & Connections

Treforest Industrial Estate is strategically located adjacent to the A470 Cardiff to Merthyr Tydfil dual carriageway, with easily accessible junctions immediately to the North and South of the Estate. J32 of the M4 motorway lies approximately 3 miles to the South. The estate benefits from a dedicated train station, with a 20 minute journey time to Cardiff City Centre, where intercity connections are available.





## Description

Situated on one of Wales's premier locations, Unit F6 presents a rare opportunity for a detached industrial warehouse available for immediate occupation.

The unit offers 17,086 sq ft of open plan warehouse accommodation with LED lighting and a further 4,949 sq ft of office accommodation, three roller shutter doors, kitchen and W.C. facilities and externally there is car parking and EV charging points. The property benefits from main road frontage at the Southern end of the estate, near the Department of Work & Pensions offices and Castle Bingo.



## Accommodation:

Unit	Property Type	Size (sq ft)	Availability	PCM Rent (£)
F6	Warehouse	22,035	Immediately	5,510
Total		22,035		

Unit can be leased on a short-term basis for a minimum of 6 months.

## Further information

EPC  
Unit F6:  
E

Rent  
Monthly rent is an estimate based on a three-year term, excluding VAT, insurance, service charge. Payment terms vary.

Terms  
Available on new full repairing and insuring leases.

Legal costs  
All parties will be responsible for their own legal costs incurred in the transaction.

[Book a viewing](#)

**Tom Rees**  
Jenkins Best  
tom@jenkinsbest.com  
07557 161 491

**Craig Jones**  
Jenkins Best  
craig@jenkinsbest.com  
02920 340 033

**Ross Jenkins**  
Mileway  
walesandsouthwest@mileway.com  
0292 168 0815

**Neil Francis**  
Knight Frank  
neil.francis@knightfrank.com  
07766 511 983

**Rhys Price**  
Knight Frank  
rhys.price@knightfrank.com  
07974 366 099

This document (together with any attachments, appendices, and related materials, the "Materials") is provided on a confidential basis for informational due diligence purposes only and is not, and may not be relied on in any manner as legal, tax, investment, accounting or other advice or as an offer or invitation to lease the property referred to herein or otherwise enter into any other transaction, agreement or arrangement, nor shall it or the fact of its distribution form the basis of, or be relied on in connection with, any lease or other contract or any commercial or investment decision. If such offer is made, it will only be made by means of heads of terms (collectively with any additional documents, the "Heads of Terms"), which would contain material information not contained in the Materials and which would supersede and qualify in its entirety the information set forth in the Materials. In the event that the descriptions or terms described herein are inconsistent with or contrary to the descriptions in or terms of the Heads of Terms, the Heads of Terms shall control. None of Mileway nor any of its respective affiliates makes any representation or warranty, express or implied, as to the accuracy or completeness of the information contained herein and nothing contained herein should be relied upon as a promise or representation of any kind.

**Mileway**