

East Point Industrial Estate

Cardiff, CF3 2GA

Warehouse | 3,210 ft²



Electric roller shutter doors



LED lighting



6.45 m maximum eaves height



Car parking areas



Fenced and gated estate

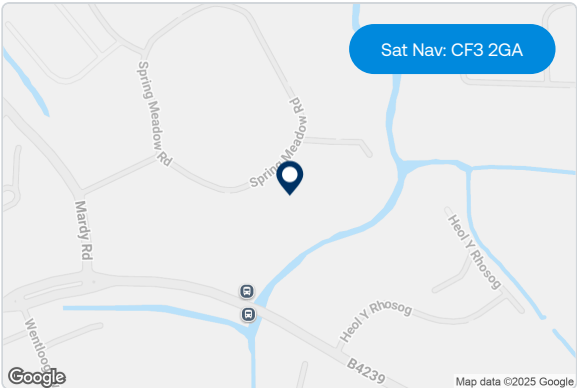
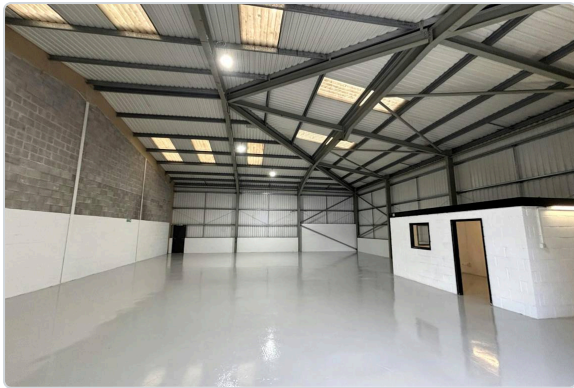


Recently refurbished

Recently refurbished

LastMileFirst | mileway.com





Description

Unit C9 is a modern light industrial, trade, and warehouse unit prominently positioned opposite the entrance to the estate. Constructed with a steel portal frame, profile metal cladding, and a pitched roof, the unit offers a clear warehouse space accessed via a full-height roller shutter door. Recently refurbished, it features LED lighting and single-storey office accommodation with W.C. facilities. Located within a secure, fenced, and gated estate, the property benefits from excellent road links and is situated in an established distribution and trade area. Externally, there are generous loading and circulation areas along with communal parking.

Location

East Point Industrial Estate is located in the established industrial area of Wentloog, approximately 3 miles to the east of Cardiff city centre. The estate is 5 minutes from the A48(M) which in turn links with the M4 Motorway at Junction 30 (heading west) and Junctions 29 (heading east). The estate is accessed from Mardy Road via Lamby Way. Occupiers include Royal Mail, Afonwen Laundry and Marstons Brewery.

Further information

EPC Unit C9 : C	Rent Monthly rent is an estimate based on a three-year term, excluding VAT, insurance, service charge. Payment terms vary.	Terms Available on new full repairing and insuring leases.	Legal costs All parties will be responsible for their own legal costs incurred in the transaction.
---------------------------	--	--	--

[Book a viewing](#)

Ross Jenkins
Mileway
walesandsouthwest@mileway.com
0292 168 0815

Tom Rees
Jenkins Best
tom@jenkinsbest.com
07557 161 491

Neil Francis
Knight Frank
neil.francis@knightfrank.com
07766 511 983

Craig Jones
Jenkins Best
craig@jenkinsbest.com
02920 340 033

Kate Maffey
Knight Frank
Kate.Maffey@knightfrank.com
07977 759 501



Accommodation:

Unit	Property Type	Size (sq ft)	Availability	PCM Rent (£)
Unit C9	Warehouse	3,210	Under offer	2,210
Total		3,210		

Rent is quoted on a per calendar month basis and is provided as a market estimate, subject to change on an assumed three year term. Rent is exclusive of rates, VAT, insurance, and service charge. Please note that rent payment may not be due monthly.

This document (together with any attachments, appendices, and related materials, the "Materials") is provided on a confidential basis for informational due diligence purposes only and is not, and may not be relied on in any manner as legal, tax, investment, accounting or other advice or as an offer or invitation to lease the property referred to herein or otherwise enter into any other transaction, agreement or arrangement, nor shall it or the fact of its distribution form the basis of, or be relied on in connection with, any lease or other contract or any commercial or investment decision. If such offer is made, it will only be made by means of heads of terms (collectively with any additional documents, the "Heads of Terms"), which would contain material information not contained in the Materials and which would supersede and qualify in its entirety the information set forth in the Materials. In the event that the descriptions or terms described herein are inconsistent with or contrary to the descriptions in or terms of the Heads of Terms, the Heads of Terms shall control. None of Mileway nor any of its respective affiliates makes any representation or warranty, express or implied, as to the accuracy or completeness of the information contained herein and nothing contained herein should be relied upon as a promise or representation of any kind.

Mileway