

Dudley Port Retail Centre

Tipton DY4 7RQ

Warehouse | 1,970 ft²



Roller shutter doors



Communal parking

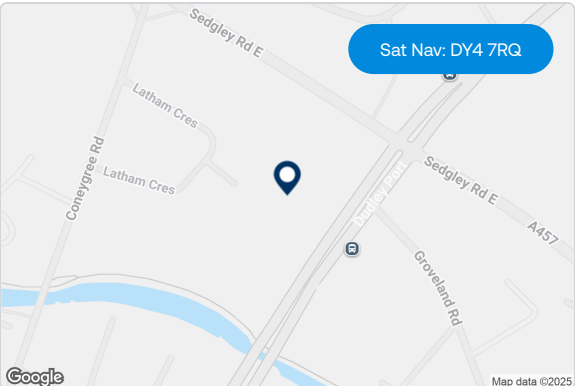
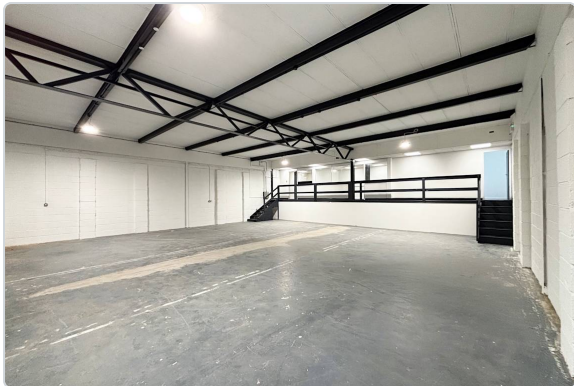


Within close proximity to M5/M6



24 hour access





Description

Dudley Port Business Centre is prominently positioned, fronting the A461 in Tipton. The retail units have been recently refurbished and are ready for immediate occupation. They have prominent roadside presence and benefits from high levels of passing traffic. Allocated car parking spaces to the front of unit available. Prices are exclusive of VAT.

Location

Dudley Port Business is located in Tipton on the A461 which is a key road between Dudley and Great Bridge and links to the A41 which provides access to West Bromwich and Wednesbury. The estate is within close proximity to the M5/M6 motorway network which leads to Birmingham.

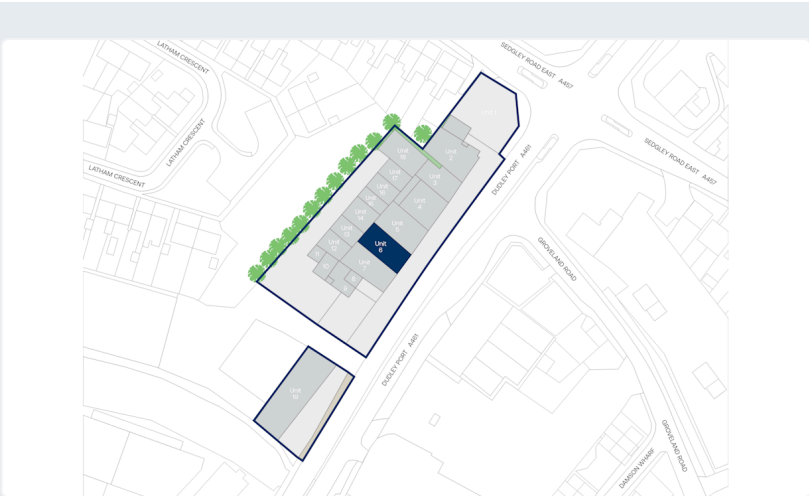
Further information

EPC
Unit 6: B

Rent
Monthly rent is an estimate based on a three-year term, excluding VAT, insurance, service charge. Payment terms vary.

Terms
Available on new full repairing and insuring leases.

Legal costs
All parties will be responsible for their own legal costs incurred in the transaction.



Accommodation:

Unit	Property Type	Size (sq ft)	Availability	PCM Rent (£)
Unit 6	Warehouse	1,970	Immediately	2,100
Total		1,970		

Rent is quoted on a per calendar month basis and is provided as a market estimate, subject to change on an assumed three year term. Rent is exclusive of rates, VAT and insurance. Please note that rent payment may not be due monthly.

[Book a viewing](#)

Mileway

Tom Clough
midlands@mileway.com
0121 368 1760



Jack Summers
js@hexagoncommercial.co.uk
07446 912228

This document (together with any attachments, appendices, and related materials, the "Materials") is provided on a confidential basis for informational due diligence purposes only and is not, and may not be relied on in any manner as legal, tax, investment, accounting or other advice or as an offer or invitation to lease the property referred to herein or otherwise enter into any other transaction, agreement or arrangement, nor shall it or the fact of its distribution form the basis of, or be relied on in connection with, any lease or other contract or any commercial or investment decision. If such offer is made, it will only be made by means of heads of terms (collectively with any additional documents, the "Heads of Terms"), which would contain material information not contained in the Materials and which would supersede and qualify in its entirety the information set forth in the Materials. In the event that the descriptions or terms described herein are inconsistent with or contrary to the descriptions in or terms of the Heads of Terms, the Heads of Terms shall control. None of Mileway nor any of its respective affiliates makes any representation or warranty, express or implied, as to the accuracy or completeness of the information contained herein and nothing contained herein should be relied upon as a promise or representation of any kind.

Mileway