

Building 2 Office 23 Tameside Business Park

Windmill Lane Denton M34 3QS

Office | 535 ft²



Located just off J24 of the M60



24/7 access



On Site Centre Manager



On-site car parking

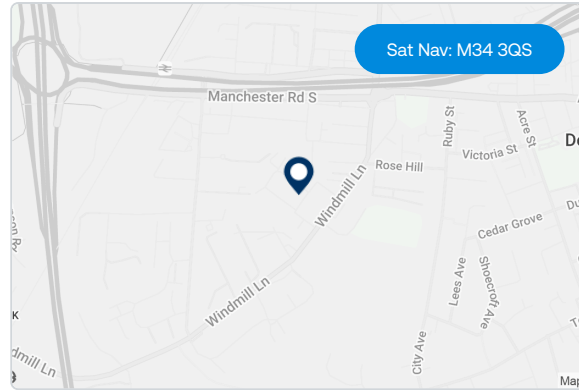
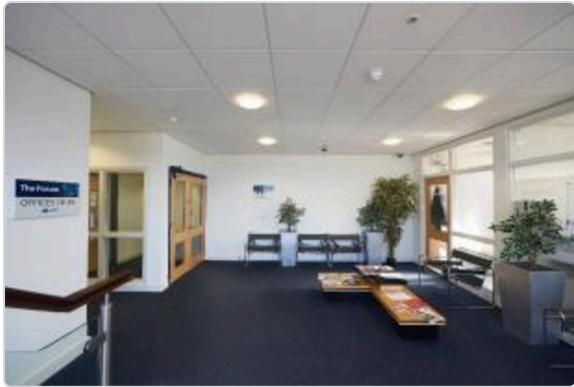


On-site office and industrial units

Available to Let



LastMileFirst | [mileway.com](https://www.mileway.com)



Description

Tameside Business Park Office To Let - 535 sq ft. The established business park has been re-configured and extended to provide a range of high-quality offices in a 25,000 sq ft state-of-the-art complex known as The Forum. Externally, the property also benefits from 24 hour out of hours access, secure parking, an on-site café and dedicated Centre Manager based in The Forum. Flexible lease terms and incentives available.

Further information

EPC
B2.23
- C

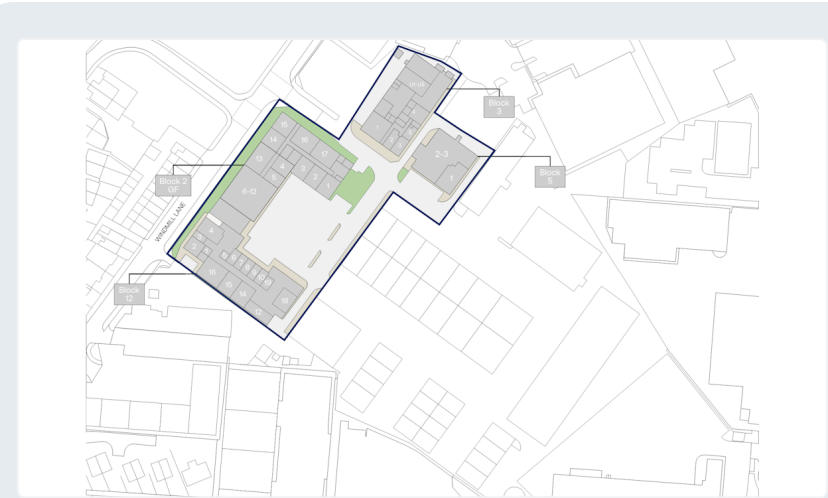
Rent
Monthly rent is an estimate based on a three-year term, excluding VAT, insurance, service charge. Payment terms vary.

Terms
Available on new full repairing and insuring leases.

Legal costs
All parties will be responsible for their own legal costs incurred in the transaction.

Location

Tameside Business Park is located to the east of Manchester, near Denton Town Centre – ideal for businesses seeking a high-quality commercial space with excellent links to the national motorway network. The scheme is a local landmark with a prominent frontage to Windmill Lane. Its proximity to the M67/M60 intersection allows quick and easy access to Manchester City Centre, Stockport and South Yorkshire. Denton offers a range of shops and businesses with Crown Point Shopping Park, Premier Inn, Brewers Fayre and Sainsbury's nearby.



Accommodation:

Unit	Property Type	Size (sq ft)	Availability	PCM Rent (£)
Unit B2.23	Office	535	Immediately	569
Total		535		

[Book a viewing](#)

Adam Smith
Mileway
northwest@mileway.com
01925 358160

Felix O'Neill
Mileway
Felix.Oneill@mileway.com
07435 912732

Michele Dalgarno
Mileway
michele.dalgarno@tamesidebp.co.uk
07968 856010

This document (together with any attachments, appendices, and related materials, the "Materials") is provided on a confidential basis for informational due diligence purposes only and is not, and may not be relied on in any manner as legal, tax, investment, accounting or other advice or as an offer or invitation to lease the property referred to herein or otherwise enter into any other transaction, agreement or arrangement, nor shall it or the fact of its distribution form the basis of, or be relied on in connection with, any lease or other contract or any commercial or investment decision. If such offer is made, it will only be made by means of heads of terms (collectively with any additional documents, the "Heads of Terms"), which would contain material information not contained in the Materials and which would supersede and qualify in its entirety the information set forth in the Materials. In the event that the descriptions or terms described herein are inconsistent with or contrary to the descriptions in or terms of the Heads of Terms, the Heads of Terms shall control. None of Mileway nor any of its respective affiliates makes any representation or warranty, express or implied, as to the accuracy or completeness of the information contained herein and nothing contained herein should be relied upon as a promise or representation of any kind.

Mileway